

## Installation Guide - Artificial Grass

**Please read through all the instructions before installing your artificial grass.**

**GardenMark Montana** and **Kentucky** artificial grass is manufactured in 7.5' and 15' wide rolls. **Augusta** is manufactured in 15' wide rolls. All rolls are 100' long.

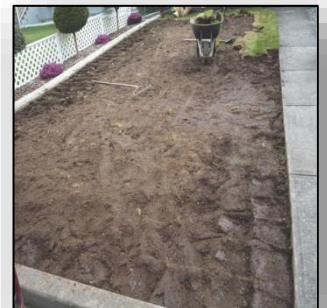
Before ordering grass, draw out a basic plan of the area. By keeping the roll width in mind when planning your project, you will avoid ordering more than you may need and thus reduce waste. We at **GardenMark** are here to help when you are planning your project and will be able to advise you on your requirements.

**In order to avoid different tone colors, it is important to keep the pile direction the same when joining sections together.**

### Installation Instructions

#### Base Preparation

- Prepare the area by removing natural grass or sod. Depending on the size of the existing lawn, a sod cutter is a great tool for this task. Remove all debris and cap off sprinkler heads, if present.
- Level and smooth out the area. You may want to compact the area as well.
- Add 3" – 4" crushed granite with fine material (1/4 minus) or crushed stone aggregate. Top off with 1" of stone dust.
- is important to note that any undulation on the surface will be visible once the turf has been installed. It is also important to note that while the stone base will aid in the drainage properties of the system, a slight slope is recommended to ensure proper drainage.
- Smooth out the aggregate using a screen or rake.
- Compact the base using a compactor or cement roller. Spray water on the aggregate and compact again.



[www.GardenMarkCanada.ca](http://www.GardenMarkCanada.ca)



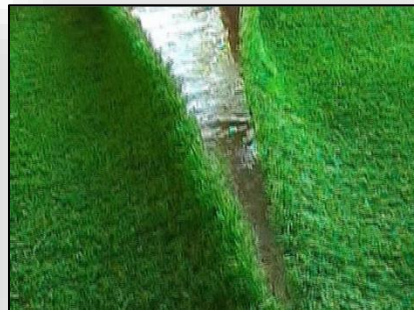
### Installing GardenMark Turf

- Before rolling out **GardenMark** turf, we strongly recommend covering the entire compacted base with **WeedMark** or another weed fabric barrier. This will help to prevent weeds from growing.
- Lay **GardenMark** turf on top of **WeedMark** weed control fabric and trim in areas as needed. Cut from the back using a box knife.
- Once the grass is set in place, anchor it down along the edges with **NailMark**. **NailMark** should be placed every 6" along the perimeter. Place the nails 1" - 2" from the outside edges.
- Start on one side of the application area so you can pull the turf tight from the other side. This process is most important, so your turf is attached securely and properly.
- **It is important to lay the turf with all grass fibers or blades going in the same direction to ensure that all pieces of turf match up.**
- You are essentially cutting the turf to create the exact shape of your area, so the fewer pieces of turf used, the better; this will eliminate or significantly reduce seaming pieces together.



[www.GardenMarkCanada.ca](http://www.GardenMarkCanada.ca)

- Often times, you will need to seam two or more pieces of turf together. The use of **TapeMark** and **BondMark** is essential to do this properly.
- When seaming two pieces of turf together, it is important to lay everything out to make sure that it lines up properly, being sure to leave a small separation (approximately 1/4") between the two pieces of turf that you will seam together. Roll the two pieces of grass back in order to lay **TapeMark** seaming tape underneath the two sections.
- Apply a generous amount of **BondMark** adhesive to the seaming tape. Carefully, lay the two pieces of grass together so that the fibers or blades do not stick to the **BondMark** adhesive. Using **NailMark**, nail the stakes every 6" serpentine style along the seamed area. We recommend using **BondMark** adhesive when the temperature is 45° F or higher. You should plan to use approximately one tube of **BondMark** for every 15 – 20 linear feet of **TapeMark** seaming tape.



- Let set for 24-48 hours. You can also apply sand on top of the turf along the seam to give the turf added weight so it will adhere more quickly and firmly to the seaming tape.
- After letting the turf set, it is important to fluff the turf up with a rake or power broom to raise the blades. This helps to give the turf a finished, quality look and feel.

[www.GardenMarkCanada.ca](http://www.GardenMarkCanada.ca)

